

ASH ARRESTOR™ 9000
Patent Pending
Owners Manual

Thank you for purchasing your new ASH ARRESTOR™ manufactured by B&B Innovative Solutions LLC. We appreciate your business!

Solving the Ash issue:

The ASH ARRESTOR™ 9000 was designed to provide you with additional protection from ash contacting the outside of your building as well as allowing easier cleaning of the venting on your corn/pellet heating appliance. Cleaning can now be a “cleaner” operation by utilizing the ASH ARRESTOR™ to catch the ash as you clean your venting.

Vent Cleaning Simplified:

Simply remove the top of the ASH ARRESTOR™ and assemble your venting brush on to the rod that has been put through the hole in the front of the ASH ARRESTOR™. (Figure 2) Clean as usual allowing the ash to be pulled into the ASH ARRESTOR™ catch drawer and not all over the ground and yourself.

INSTALLATION NOTES

Read through all of these instructions before beginning your installation. Failure to install as described in this instruction may put you in danger. Keep these instructions for future reference.

A MAJOR CAUSE OF VENT RELATED FIRES IS FAILURE TO MAINTAIN REQUIRED CLEARANCES (AIR SPACES) TO COMBUSTIBLE MATERIALS. IT IS VERY IMPORTANT THAT THIS PRODUCT BE INSTALLED ONLY IN ACCORDANCE WITH THESE INSTRUCTIONS.

The standard minimum clearance to combustibles is 3”. For additional protection the mounting arms on the ASH ARRESTOR™ will limit the installation to a minimum of 4” from the building. Any modification of these mounting arms to install the unit closer than 4” or any filling of clearance space with a combustible material to the building will put you at risk.

PERMITS

Contact your local building code or fire officials regarding permits, restrictions, and installation inspection in your area.

Ensure that all NFPA rules are followed for distance from windows and openings. NFPA 211 6-3.5 Termination: 6-3.5 Mechanical draft system need not comply with 6-3.1 and 6-3.3 provided they comply with the following: (a) The exit terminal of a mechanical draft system, other than a direct vent appliance (sealed combustion system appliance), shall be located in accordance with the following:

1. Not less than 3ft (.91m) above any forced air inlet located within 10ft (3m).
2. Not less than 4 ft. (1.2m) below, 4ft (1.2m) horizontally from or 1ft. (304mm) above any door, window or gravity air inlet into any building, and;

3. Not less than 2ft. (.61m) from an adjacent building and not less than 7ft. (2.1m) above grade when located adjacent to public walkways.

B&B Innovative Solutions LLC. is not responsible for improperly installed venting design and installation. Venting instructions from venting manufacturer must be followed. See your local dealer if you have any questions related to installation.

TOOLS AND EQUIPMENT YOU MAY NEED

Contents (screw pack, left mounting angle, right mounting angle, brush gasket, ash arrestor housing)

1. Eye Protection
2. Tape Measure
3. Drill with 1/8 inch and ¼ inch drill bits
4. Screwdriver #2 phillips tip
5. 2 ft level

INSTALLATION STEPS

- Step One: Clamp or tape mounting brackets (2) on to ASH ARRESTOR™ unit ensuring left bracket is on left side and right bracket is on right side. (Figure 2)
- Step Two: Position ASH ARRESTOR™ over 3” vent pipe. The pipe should fit evenly in the pipe opening. (Hole in unit should not touch vent pipe.) (Figure 1)
- Step Three: Level unit and mark mounting holes on building. Note: Mark where pipe goes through ASH ARRESTOR™ for later aluminum tape application.
- Step Four: Drill 1/8th inch holes into building at marked points.
- Step Five: Mount angle brackets (2) on building with screws provided. (Note because of the use of different building materials, fiber board for example may require, specialized mounting screws to anchor angle brackets securely to building.) (Not Provided)
- Step Six: Insert Brush gasket into slots in the back inside of the ASH ARRESTOR™. (Figure 1) and wrap the piece of aluminum tape around vent pipe where brush gasket contacts it.
- Step Seven: Position ASH ARRESTOR™ and slide angles on to angle brackets mounted to the building. Slide back until angles on unit contact the stops on the angles mounted to the ASH ARRESTOR™ or venting stops inside ASH ARRESTOR™ are contacted. (Figure 1)
- Step Eight: Using a ¼ drill bit, drill out the hole in the mounting bracket to allow you to secure angle brackets together with stainless steel screws(2) provided.

ASH ARRESTOR™ MAINTENANCE INSTRUCTIONS

CAUTION UNIT MAY BE HOT. If cleaning or maintenance is done with stove running the unit will be **HOT**.

The ASH ARRESTOR™ is designed to provide additional protection against the build up of ash on the outside of your building. Proper maintenance of the ASH ARRESTOR™ and your corn/pellet appliance venting is required for it to operate effectively. Read and follow your corn/pellet stove and venting manufacturer’s maintenance manuals to determine maintenance instructions/intervals for each specific appliance.

Please note: Outdoor heat, cold and air traveling over your Ash Arrestor can cause the potential for the creation of condensation which will be evident in the dripping of water from the unit. **(Some of this is normal on the outside.)** The Ash Arrestor™ 9000 has been designed to operate at medium – high range of stove heat levels allowing the unit to remain at an operating temperature that will help to prevent condensation inside of the unit, however, long vent runs can also reduce the heat to the point of making condensation in the unit. Special insulation has been installed into the drawer and top areas of the unit to help limit the effects of this condensation; however it may be necessary that an additional insulation kit be purchased to further limit this effect depending on venting design. In general, venting with a rise up to 7 feet and stoves operating at medium to high ranges will keep the unit operating properly.

If you intend on running your stove at low levels and/or have venting lengths that are conducive to condensation production within your unit. Please contact your local dealer to purchase the add-on insulation kit. B&B Innovative Solutions LLC is not responsible for any consequential damages resulting from Ash Arrestor™ use.

Weekly / Monthly Cleaning

The ASH ARRESTOR™ is designed to collect approximately a month's worth of the ash that exits your vent pipe. Different brands of corn/pellet appliances produce ash at different rates depending on model and fuel quality. Many conditions may affect the interval between emptying the ash from the ASH ARRESTOR™ so it is recommended that the ash drawer be inspected at a minimum every **two** weeks.

Your ASH ARRESTOR™ drawer should be removed and cleaned and the unit should be inspected for any obstructions that may have built up as a result of appliance operation. It is recommended that you lightly tap on the mounting rails to help remove any ash that may have accumulated on the air vents. Wipe off vents with wet paper towel on outside of unit. It is also recommended that a small quantity of oil be placed on the ASH ARRESTOR™ lid catch screws to assure continued ease of operation. Ensure that the ash diverter baffle slides down on the front side of the guides when re-attaching the top. Please note that there is the potential for some condensation to leak out of the unit, this is normal due to the stove operation level and the conditions outdoors. B&B Innovations is not responsible for any consequential damages resulting from this condition.

Helpful Hint

When ash builds up on Ash Arrestor 9000 vents, it works well to vacuum the vents with your ash vacuum and the brush attachment. It is very important to make sure your vents are clear of ash, if too much ash builds up on vents it may hinder stove operation. Enjoy your new Ash Arrestor 9000.

End of Heating Season

Seasonally your ASH ARRESTOR™ needs to be removed from your building, cleaned and stored in a dry place. The ASH ARRESTOR™ can be simply rinsed off with a garden hose and a mild detergent may be used if necessary. This will help to ensure the longevity of your unit.

B&B Innovative Solutions LLC. grants no warranty, implied or stated for the installation or maintenance of the ASH ARRESTOR™ 9000 and assumes no responsibility for any consequential damages from the operation of this unit.

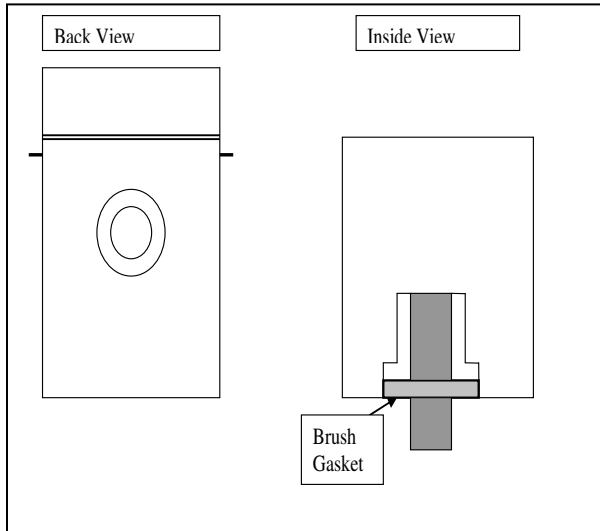


Figure 1

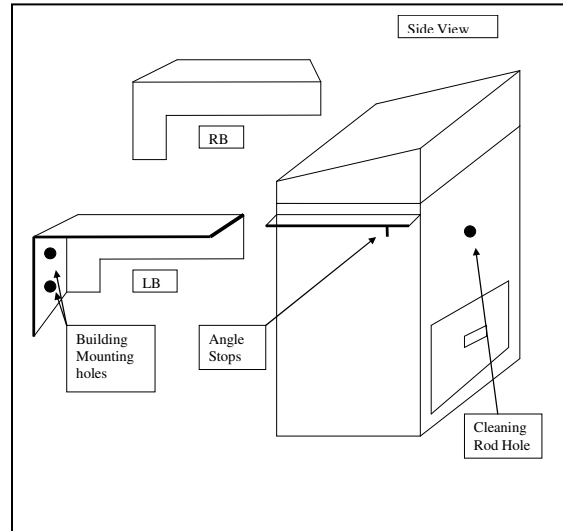


Figure 2